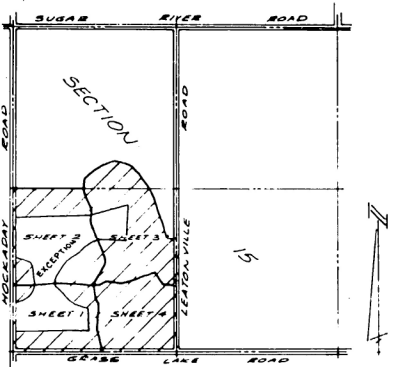
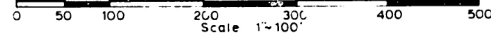


# FAIRFIELD REALM

Part of the West 1/2 of Section 15, T20N, R1W, Butman Township, Gladwin County, State of Michigan



LOCATION SKETCH  
NO SCALE

Certified true copy of Record plat

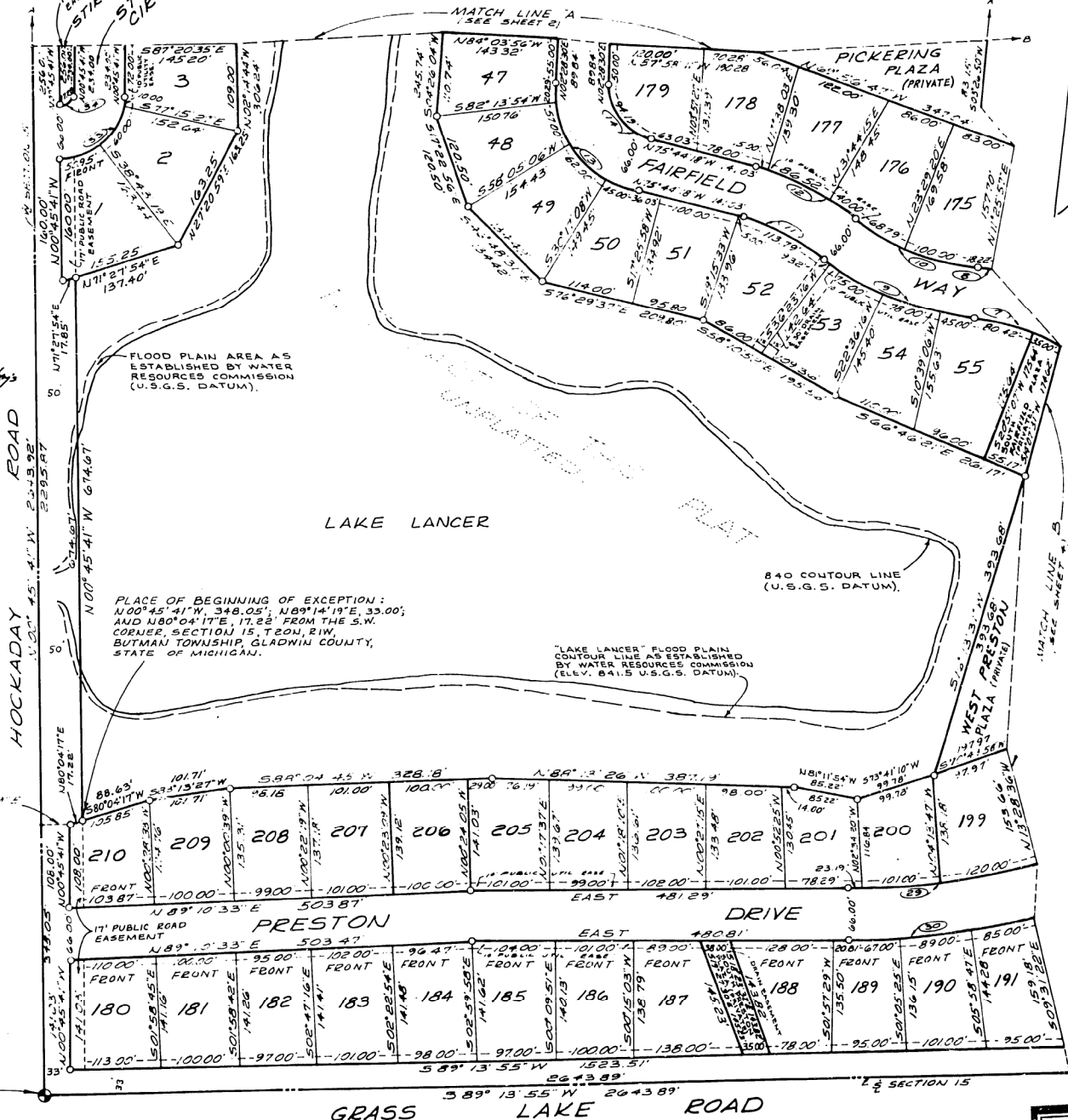
*Richard L. Smith*

Richard L. Smith  
Surveyor

June 9, 1917

THIS PLAT IS SUBJECT TO RESTRICTIONS AS REQUIRED BY ACT 288 OF 1967, AS AMENDED ON CERTAIN LOTS WITH RESPECT TO THE REQUIREMENTS OF THE MICHIGAN DEPARTMENT OF NATURAL RESOURCES AND OF THE MICHIGAN DEPARTMENT OF PUBLIC HEALTH, WHICH ARE RECORDED IN LIBER 262, PAGE 488-9 OF RECORDS OF THIS COUNTY.

	LENGTH	RADIUS	DELTA	TANGENT	LONG CHORD
7	235.42'	240.00'	56°12'09"	128.15'	157°00'43" 226.09'
8	300.16'	306.00'	56°12'09"	163.33'	157°00'43" 282.27'
9	207.32'	355.14'	33°26'53"	106.70'	108°23'27" 204.33'
10	168.79'	289.14'	33°26'53"	86.88'	108°23'27" 166.41'
11	113.79'	270.86'	21°04'18"	57.75'	103°42'09" 112.36'
12	141.52'	336.86'	21°04'18"	71.82'	103°42'09" 140.43'
13	184.29'	135.00'	78°12'48"	109.71'	136°37'54" 170.31'
14	94.19'	69.00'	78°12'48"	56.03'	136°37'54" 87.05'
29	256.19'	1070.00'	13°43'07"	128.71'	148°08'26" 255.58'
50	272.00'	1136.00'	13°43'07"	136.65'	148°08'26" 271.35'
33	120.95'	77.00'	90°00'00"	77.00'	144°14'19" 108.89'
34	17.28'	11.00'	90°00'00"	10.99'	144°14'19" 60.50'



PLACE OF BEGINNING OF EXCEPTION:  
N00°45'41"W, 348.05'; N89°14'19"E, 33.00';  
AND S80°04'17"E, 17.28' FROM THE S.W.  
CORNER, SECTION 15, T20N, R1W,  
BUTMAN TOWNSHIP, GLADWIN COUNTY,  
STATE OF MICHIGAN.

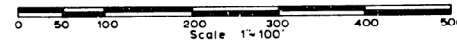
"LAKE LANCER" FLOOD PLAIN  
CONTOUR LINE AS ESTABLISHED  
BY WATER RESOURCES COMMISSION  
(ELEV. 841.5 U.S.G.S. DATUM)

- LEGEND
- 1 ALL DIMENSIONS ARE IN FEET
  - 2 CONCRETE MARKMENTS HAVE BEEN PLACED AT ALL POINTS MARKED 'O'
  - 3 ALL OF CORNERS HAVE BEEN MARKED WITH 1/2" IRON BARS 18" IN LENGTH
  - 4 BEARINGS WERE ESTABLISHED FROM SOLAR OBSERVATIONS
  - 5 CURVE DIMENSIONS ARE ARC LENGTHS

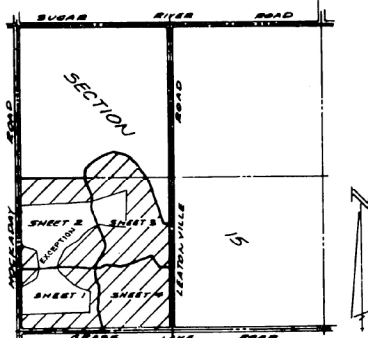
PLACE OF BEGINNING:  
S.W. CORNER SECTION 15, T20N,  
R1W, BUTMAN TOWNSHIP, GLADWIN  
COUNTY, STATE OF MICHIGAN.

# FAIRFIELD REALM

Part of the West 1/2 of Section 15, T20N, R1W, Butman Township, Gladwin County, State of Michigan.



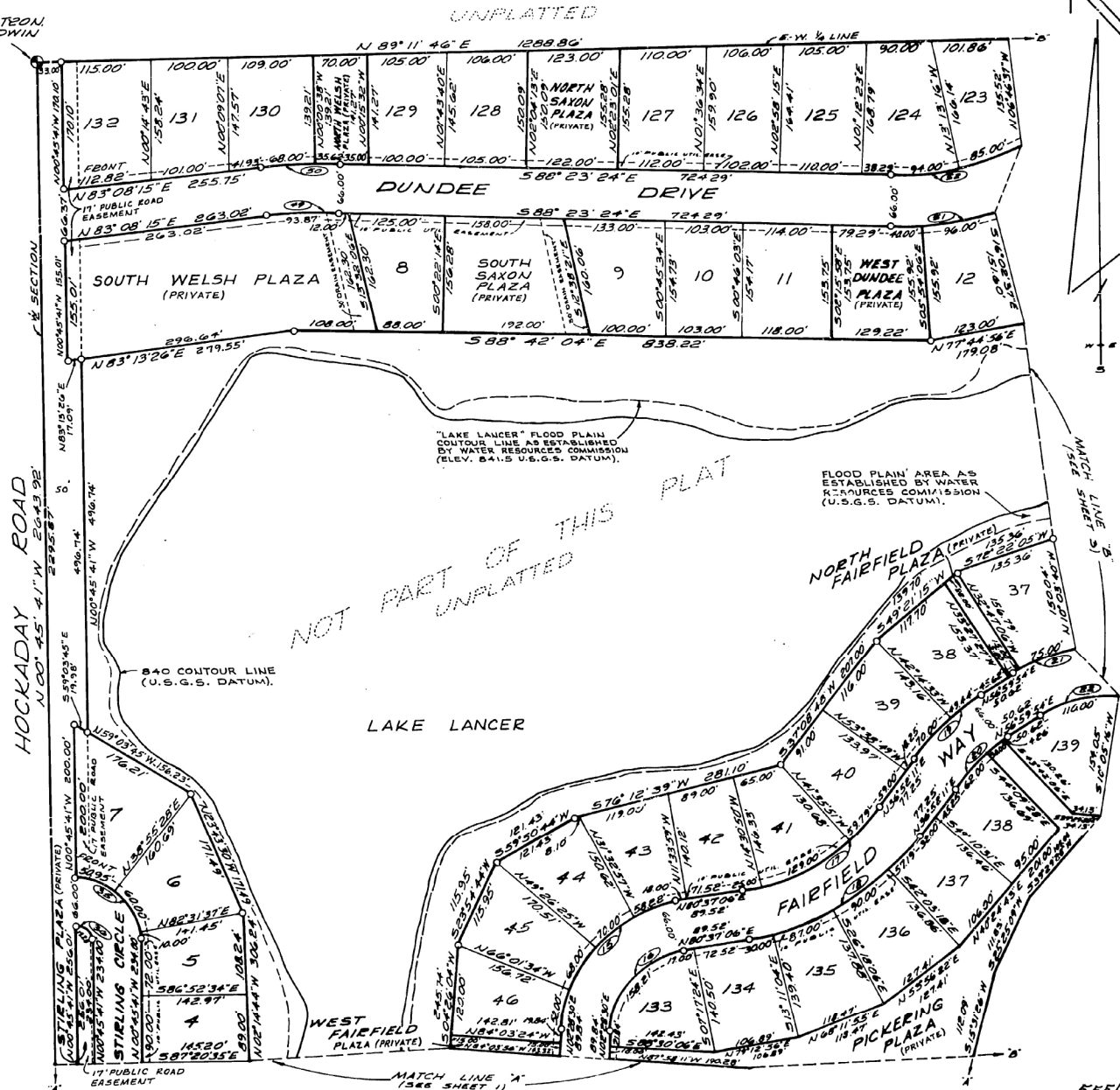
WEST 1/4 CORNER, SECTION 15 FROM  
E.M. BUTMAN, TOWNSHIP, GLADWIN  
COUNTY, STATE OF MICHIGAN.



LOCATION SKETCH  
NO SCALE

LENGTH	RADIUS	DELTA	TANGENT	LONG CHORD	
15	248.22'	182.00'	78°08'36"	147.75'	N41°32'48"E, 229.42'
16	158.21'	116.00'	78°08'36"	94.18'	N41°32'48"E, 166.23'
17	213.79'	280.00'	43°44'55"	112.41'	N58°44'38"E, 208.64'
18	264.19'	346.00'	43°44'55"	138.91'	N58°44'38"E, 257.82'
19	119.44'	34.00'	20°07'43"	60.34'	N46°56'02"E, 118.83'
20	96.26'	274.00'	20°07'43"	48.63'	N46°56'02"E, 95.76'
21	34.024'	225.00'	86°38'32"	212.18'	S79°40'50"E, 308.73'
22	24.044'	159.00'	86°38'32"	149.90'	S79°40'50"E, 218.18'
35	120.95'	77.00'	90°00'00"	77.00'	N45°45'41"W, 108.89'
36	17.28'	11.00'	90°00'00"	10.99'	N45°45'41"W, 60.50'
49	93.87'	635.00'	08°28'11"	47.01'	N87°22'20"E, 93.78'
50	103.62'	701.00'	08°28'11"	51.91'	N87°22'20"E, 103.53'
51	234.22'	433.00'	30°59'34"	120.05'	N76°06'39"E, 231.37'
52	198.52'	367.00'	30°59'34"	101.75'	N76°06'39"E, 196.11'

- LEGEND
- 1 ALL DIMENSIONS ARE IN FEET
  - 2 CONCRETE MONUMENTS HAVE BEEN PLACED AT ALL POINTS MARKED O
  - 3 ALL LOT CORNERS HAVE BEEN MARKED WITH 1/2" IRON BARS 18" IN LENGTH
  - 4 BEARINGS WERE ESTABLISHED FROM SOLAR OBSERVATIONS
  - 5 CURVE DIMENSIONS ARE ARC LENGTHS



NOT PART OF THIS  
UNPLATTED

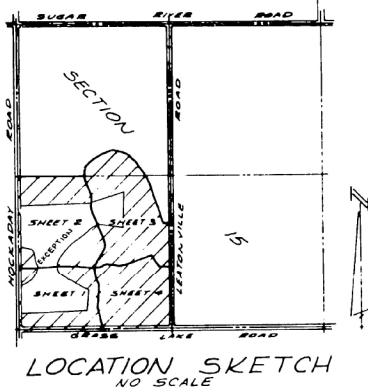
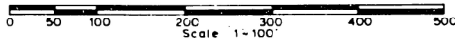
FLOOD PLAIN AREA AS  
ESTABLISHED BY WATER  
RESOURCES COMMISSION  
(U.S.G.S. DATUM).

"LAKE LANCER" FLOOD PLAIN  
CONTOUR LINE AS ESTABLISHED  
BY WATER RESOURCES COMMISSION  
(ELEV. 841.5 U.S.G.S. DATUM).

55567

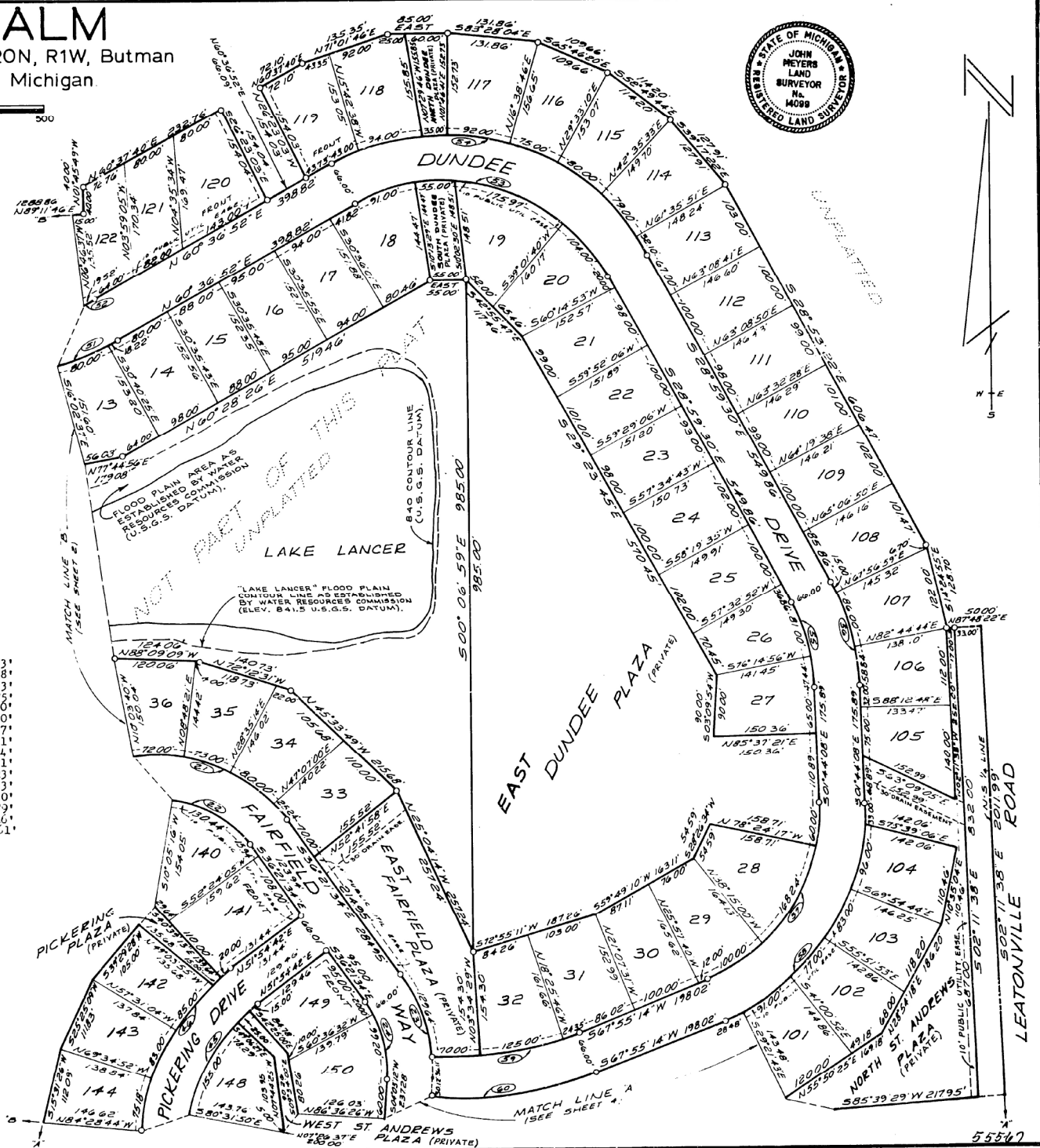
# FAIRFIELD REALM

Part of the West 1/2 of Section 15, T20N, R1W, Butman Township, Gladwin County, State of Michigan



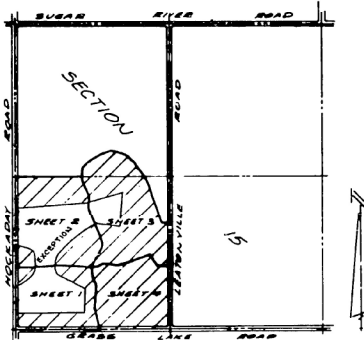
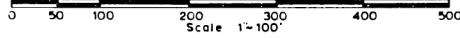
	LENGTH	RADIUS	DELTA	TANGENT	LONG CHORD	
21	340.24'	225.00'	86°38'32"	212.18'	S77°40'50"W	308.73'
22	240.44'	159.00'	86°38'32"	149.94'	S77°40'50"W	218.18'
23	165.75'	235.00'	40°24'46"	86.49'	S16°09'11"W	162.33'
24	119.20'	169.00'	40°24'46"	62.20'	S16°09'11"W	116.75'
45	223.53'	270.00'	17°26'08"	118.62'	N28°11'38"E	217.40'
46	278.18'	336.00'	47°26'08"	147.62'	N28°11'38"E	270.30'
51	234.22'	433.00'	30°59'34"	120.05'	N76°06'39"E	231.37'
52	198.52'	367.00'	30°59'34"	101.75'	N76°06'39"E	196.11'
53	425.97'	270.00'	90°23'38"	271.86'	S74°11'19"W	383.14'
54	530.10'	336.00'	90°23'38"	338.32'	S74°11'19"W	476.81'
55	128.44'	270.00'	27°15'22"	65.45'	S15°21'49"E	127.23'
56	159.84'	336.00'	27°15'22"	81.40'	S15°21'49"E	158.33'
57	328.24'	270.00'	69°39'22"	187.85'	S33°05'33"W	308.40'
58	408.48'	336.00'	69°39'22"	233.77'	S33°05'33"W	383.79'
59	219.35'	181.77'	25°48'12"	111.61'	S80°57'50"W	217.46'
60	246.69'	547.77'	25°48'12"	125.47'	S80°49'20"W	244.61'

- LEGEND**
- 1 ALL DIMENSIONS ARE IN FEET
  - 2 CONCRETE MONUMENTS HAVE BEEN PLACED AT ALL POINTS MARKED 'O'
  - 3 ALL LOT CORNERS HAVE BEEN MARKED WITH 1/2" IRON BARS 18" IN LENGTH
  - 4 BEARINGS WERE ESTABLISHED FROM SOLAR OBSERVATIONS
  - 5 CURVE DIMENSIONS ARE ARC LENGTHS



# FAIRFIELD REALM

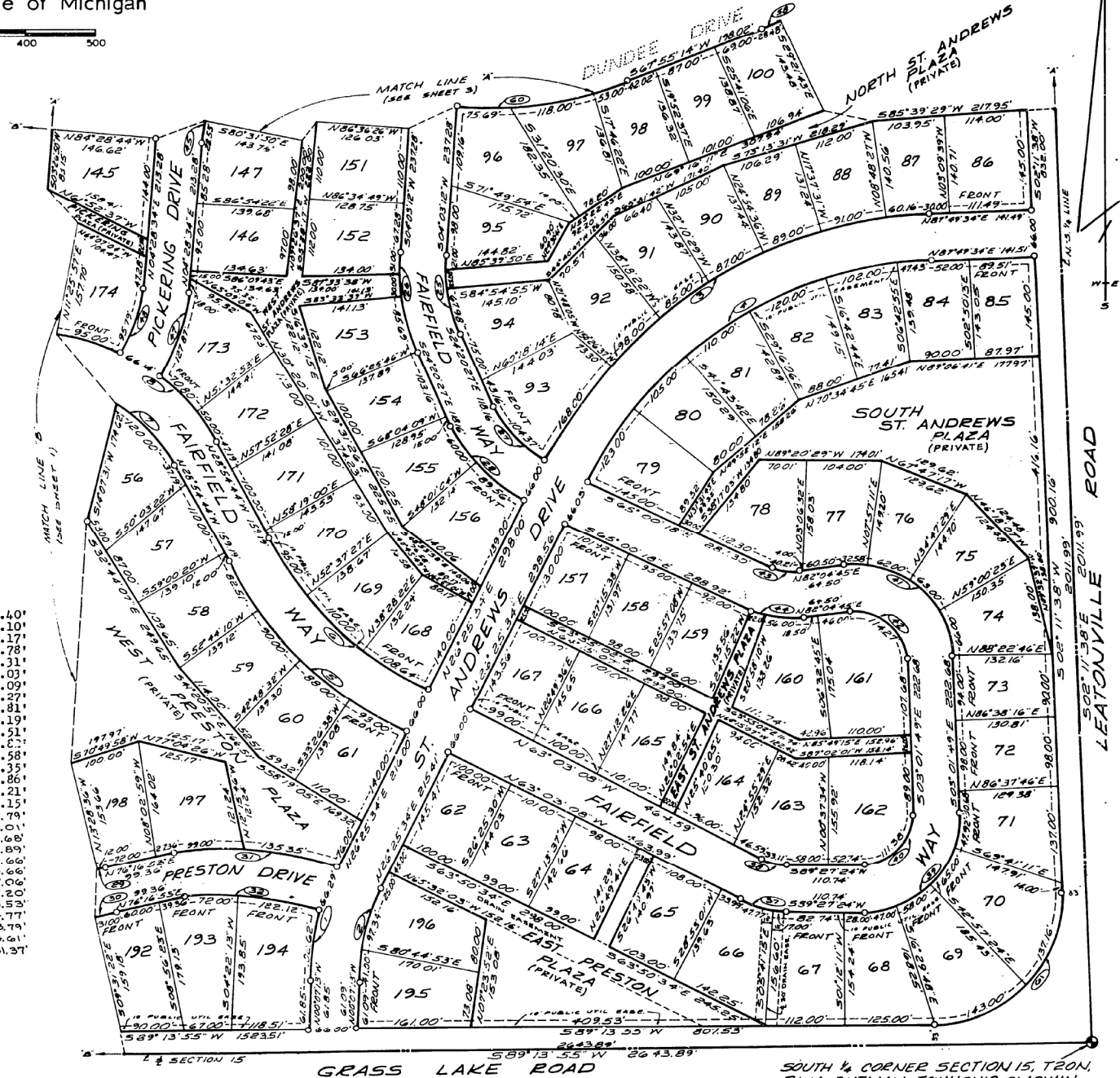
Part of the West 1/2 of Section 15, T20N, R1W, Butman Township, Gladwin County, State of Michigan



LOCATION SKETCH  
NO SCALE

LENGTH	RADIUS	DELTA	TANGENT	LONG CHORD		
1	168.91'	364.57'	26°32'17"	86.00'	N13°09'10"E	167.40'
2	138.34'	298.37'	26°32'17"	70.43'	N13°09'10"E	137.10'
3	678.16'	632.83'	61°24'00"	375.75'	N57°07'34"E	645.17'
4	607.43'	566.83'	61°24'00"	336.56'	N57°07'34"E	578.78'
5	353.51'	593.29'	34°08'24"	182.18'	N45°58'56"W	348.31'
6	313.64'	527.29'	34°04'50"	161.61'	N45°57'09"W	309.03'
7	235.42'	240.00'	56°12'09"	128.15'	N57°00'43"W	226.09'
8	300.16'	305.00'	56°12'09"	163.39'	N57°00'43"W	288.27'
25	113.98'	230.00'	28°23'39"	58.18'	S10°08'18"E	112.81'
26	146.69'	290.00'	28°23'39"	74.88'	S10°08'18"E	145.19'
27	104.37'	159.15'	37°34'29"	54.16'	S43°07'42"E	102.51'
28	149.56'	225.15'	38°03'39"	77.65'	S13°22'17"E	146.67'
29	256.19'	1070.00'	13°43'07"	128.73'	N83°08'26"E	255.58'
30	272.00'	1130.00'	13°43'07"	136.65'	N83°08'26"E	271.35'
31	234.35'	344.63'	38°55'12"	121.91'	S84°14'16"E	229.86'
32	194.12'	278.63'	39°55'04"	101.18'	S83°45'35"E	190.21'
37	64.77'	135.00'	27°29'28"	33.02'	N76°47'52"W	64.15'
38	33.11'	69.00'	27°29'28"	16.88'	N76°47'52"W	32.79'
39	217.92'	135.00'	92°29'13"	140.99'	S43°12'47"W	195.01'
40	111.38'	69.00'	92°29'13"	72.06'	S43°12'47"W	99.68'
41	223.58'	135.00'	94°53'26"	147.04'	S50°28'32"E	198.89'
42	114.27'	69.00'	94°53'26"	75.16'	S50°28'32"E	101.66'
43	40.21'	70.00'	32°54'57"	20.61'	S81°27'47"E	39.66'
44	78.13'	136.00'	32°54'57"	40.18'	S81°27'47"E	77.06'
45	223.53'	270.00'	47°26'08"	118.62'	N28°11'38"E	217.20'
47	127.87'	255.00'	28°43'21"	65.31'	N18°50'14"E	126.53'
48	95.79'	189.00'	29°01'58"	48.94'	N18°59'23"E	94.77'
58	408.48'	336.00'	6°39'22"	233.77'	S33°05'35"W	383.79'
60	246.69'	547.77'	25°48'12"	135.47'	S80°49'20"W	244.61'
61	280.16'	175.58'	91°25'33"	180.00'	S43°31'09"W	251.37'

- LEGEND:  
 1 ALL DIMENSIONS ARE IN FEET  
 2 CONCRETE MONUMENTS HAVE BEEN PLACED AT ALL POINTS MARKED O  
 3 ALL LOT CORNERS HAVE BEEN MARKED WITH 1/2" IRON BARS 18" IN LENGTH  
 4 BEARINGS WERE ESTABLISHED FROM SOLAR OBSERVATIONS.  
 5 CURVE DIMENSIONS ARE ARC LENGTHS.



SOUTH 1/4 CORNER SECTION 15, T20N, R1W, BUTMAN TOWNSHIP, GLADWIN COUNTY, STATE OF MICHIGAN.