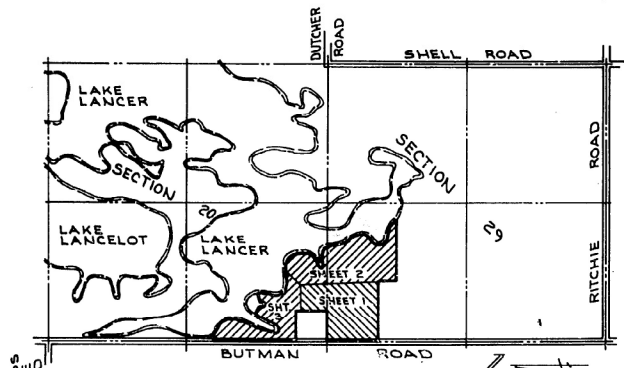
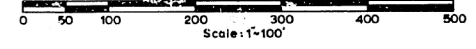


# HAMILTON REALM

Part of the Southwest 1/4 of Section 20, And Part of the North 1/2 of the Northwest 1/4 of Section 29, T 20N, R1W, Butman Township, Gladwin County, State of Michigan.



LOCATION SKETCH  
NO SCALE

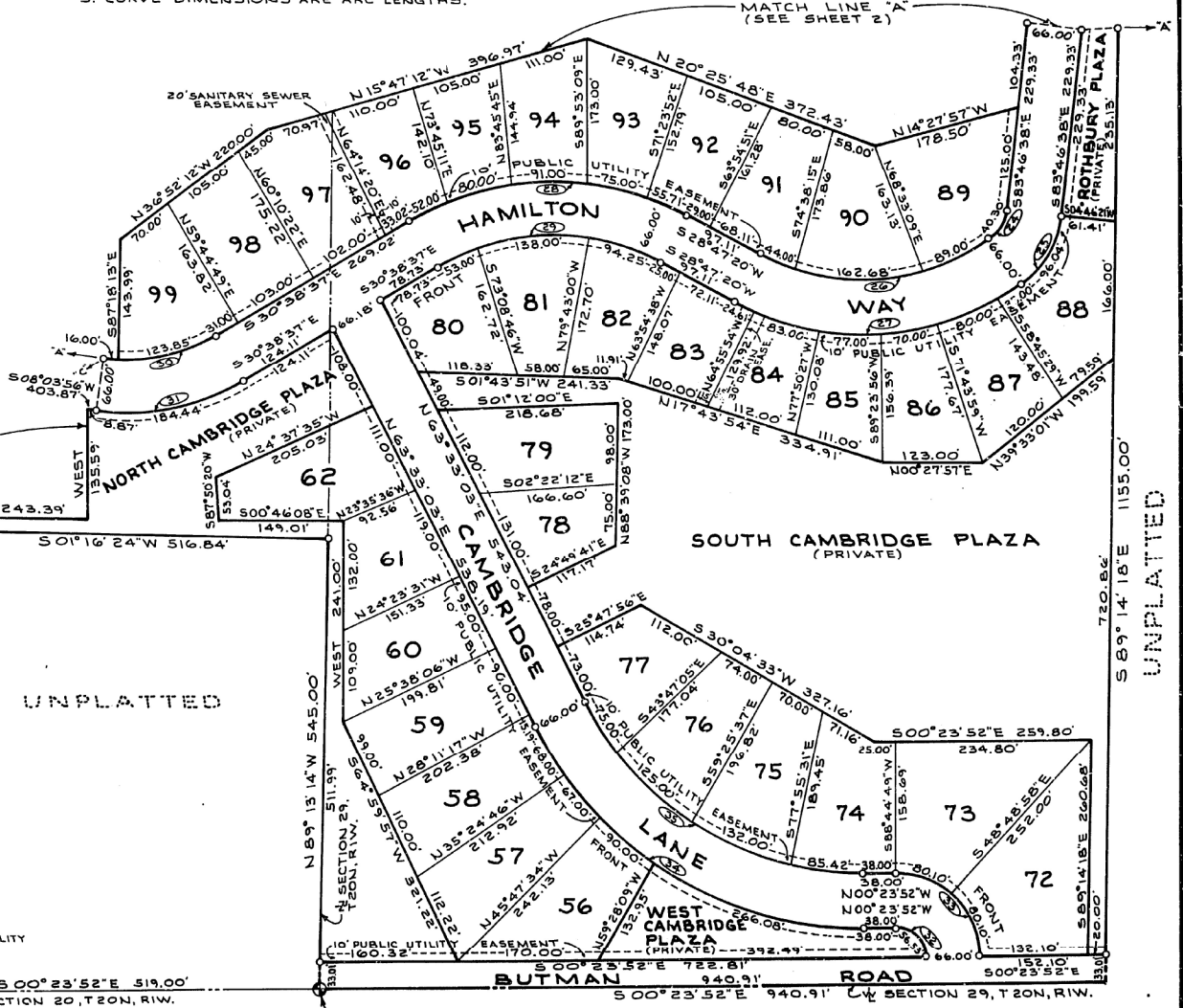
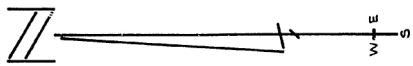
- LEGEND:
1. ALL DIMENSIONS ARE IN FEET.
  2. CONCRETE MONUMENTS HAVE BEEN PLACED AT ALL POINTS MARKED "O".
  3. ALL LOT CORNERS HAVE BEEN MARKED WITH 1/2" IRON BARS 18" IN LENGTH.
  4. BEARINGS WERE ESTABLISHED FROM SOLAR OBSERVATIONS, 3-1-71.
  5. CURVE DIMENSIONS ARE ARC LENGTHS.

LENGTH	RADIUS	CURVE DATA	DELTA	TANGENT	LONG CHORD
2.	141.68'	408.65'	19°51'49"	71.56'	N79°40'11"E, 140.97'
24.	40.30'	47.72'	48°23'35"	21.44'	N59°34'51"W, 39.11'
25.	96.04'	113.72'	48°23'35"	51.10'	N59°34'51"W, 93.22'
26.	295.68'	264.00'	64°10'23"	165.52'	S03°17'51"E, 280.47'
27.	369.61'	330.00'	64°10'23"	206.90'	S03°17'51"E, 350.59'
28.	353.71'	341.00'	59°25'57"	194.63'	N00°55'38"W, 338.07'
29.	285.25'	275.00'	59°25'57"	156.96'	N00°55'38"W, 272.63'
30.	139.85'	207.00'	38°42'33"	72.71'	N11°17'21"W, 137.20'
31.	184.44'	273.00'	38°42'33"	95.89'	N11°17'21"W, 180.95'
32.	56.53'	35.99'	90°00'00"	35.99'	S44°36'08"W, 50.89'
33.	160.20'	101.99'	90°00'00"	101.99'	S44°36'08"W, 144.23'
34.	491.08'	440.00'	63°56'55"	274.66'	S31°34'36"W, 465.99'
35.	417.42'	374.00'	63°56'55"	233.46'	S31°34'36"W, 396.09'

CERTIFIED TRUE COPY OF RECORDED PLAT

LORREN E. MONROE  
STATE TOLASURER  
By Richard E. Linn /mm  
Richard E. Linn, Plat Recorder  
Date November 7, 1979

THIS PLAT IS SUBJECT TO RESTRICTIONS AS REQUIRED BY ACT 288 OF 1967, AS AMENDED ON CERTAIN LOTS WITH RESPECT TO THE REQUIREMENTS OF THE MICHIGAN DEPARTMENT OF NATURAL RESOURCES AND OF THE MICHIGAN DEPARTMENT OF PUBLIC HEALTH, WHICH ARE RECORDED IN LIBER 271, PAGE 668-669 OF RECORDS OF THIS COUNTY.



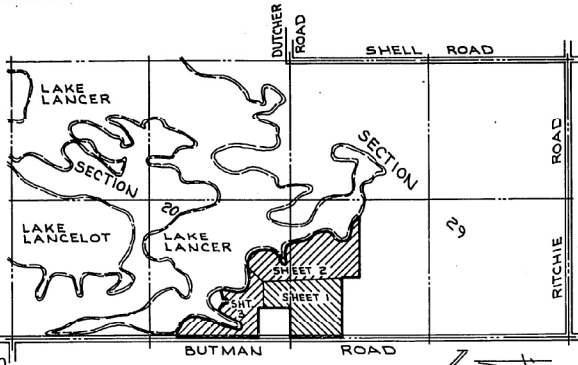
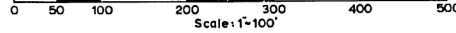
PLACE OF BEGINNING:  
N.W. CORNER, SECTION 29,  
T 20N, R1W, BUTMAN TOWNSHIP,  
GLADWIN COUNTY, MICHIGAN.

UNPLATTED

57127

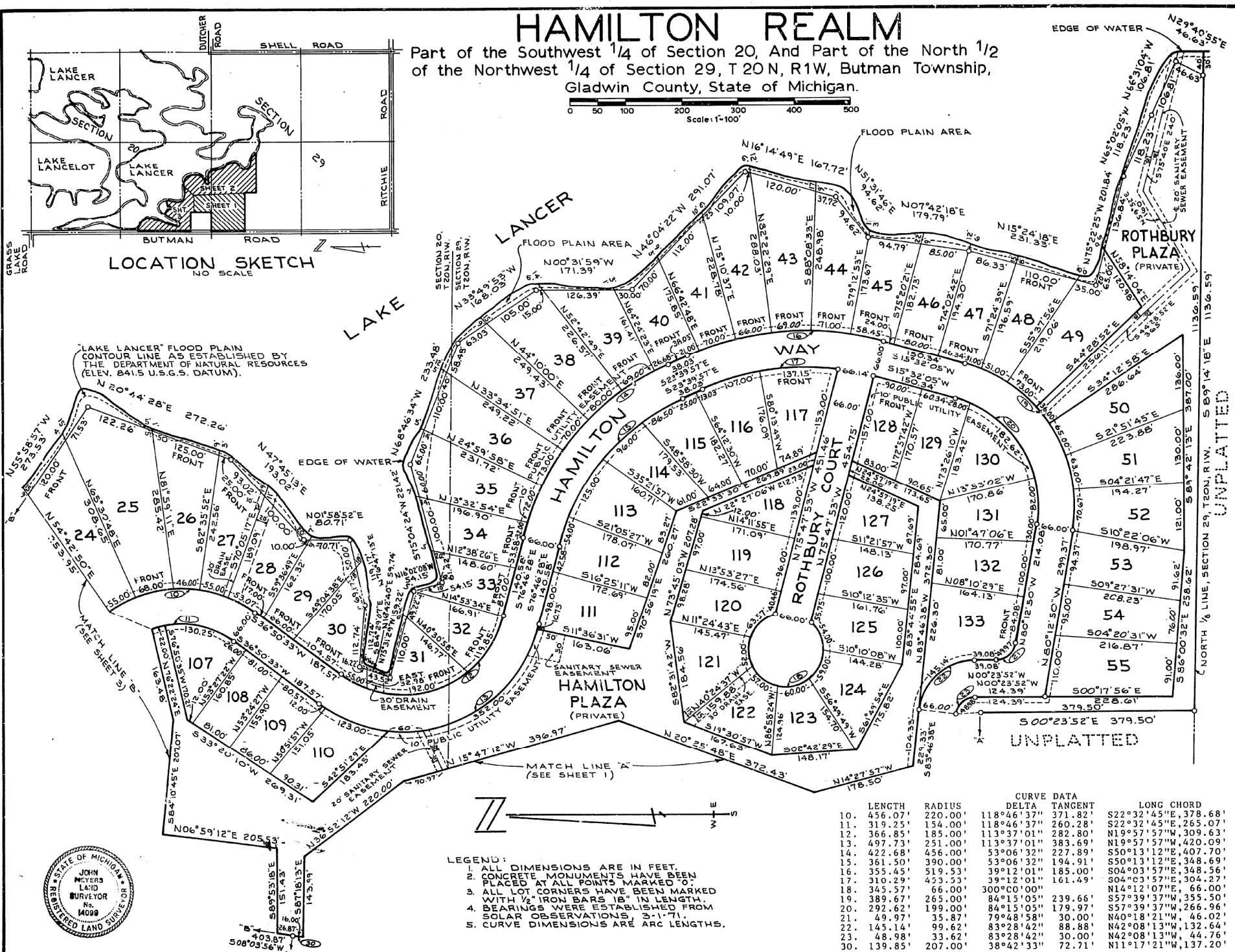
# HAMILTON REALM

Part of the Southwest 1/4 of Section 20, And Part of the North 1/2 of the Northwest 1/4 of Section 29, T 20N, R1W, Butman Township, Gladwin County, State of Michigan.



LOCATION SKETCH  
NO SCALE

"LAKE LANCER" FLOOD PLAIN  
CONTOUR LINE AS ESTABLISHED BY  
THE DEPARTMENT OF NATURAL RESOURCES  
(ELEV. 841.5 U.S.G.S. DATUM).



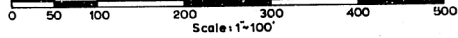
- LEGEND:
1. ALL DIMENSIONS ARE IN FEET.
  2. CONCRETE MONUMENTS HAVE BEEN PLACED AT ALL POINTS MARKED 'O'.
  3. ALL LOT CORNERS HAVE BEEN MARKED WITH 1/2" IRON BARS 12" IN LENGTH.
  4. BEARINGS WERE ESTABLISHED FROM SOLAR OBSERVATIONS, 3-1-71.
  5. CURVE DIMENSIONS ARE ARC LENGTHS.

	LENGTH	RADIUS	DELTA	TANGENT	LONG CHORD
10.	456.07'	220.00'	118°46'37"	371.82'	S22°32'45"E, 378.68'
11.	319.25'	154.00'	118°46'37"	260.28'	S22°32'45"E, 265.07'
12.	366.85'	185.00'	113°37'01"	282.80'	N19°57'57"W, 309.63'
13.	497.73'	251.00'	113°37'01"	383.69'	N19°57'57"W, 420.09'
14.	422.68'	456.00'	53°06'32"	227.89'	S50°13'12"E, 407.70'
15.	361.50'	390.00'	53°06'32"	194.91'	S50°13'12"E, 348.69'
16.	355.45'	519.53'	39°12'01"	185.00'	S04°03'57"E, 348.56'
17.	319.29'	453.53'	39°12'01"	161.49'	S04°03'57"E, 304.27'
18.	345.57'	66.00'	300°00'00"		N14°12'07"E, 66.00'
19.	389.67'	265.00'	84°15'05"	239.66'	S57°39'37"W, 355.50'
20.	292.62'	199.00'	84°15'05"	179.97'	S57°39'37"W, 266.96'
21.	49.97'	35.87'	79°48'58"	30.00'	N40°18'21"W, 46.02'
22.	145.14'	99.62'	83°28'42"	88.88'	N42°08'13"W, 132.64'
23.	48.98'	33.62'	83°28'42"	30.00'	N42°08'13"W, 44.76'
30.	139.85'	207.00'	38°42'33"	72.71'	N11°17'21"W, 137.20'



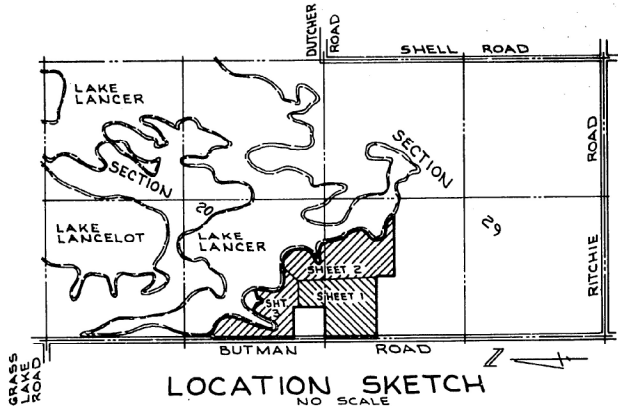
# HAMILTON REALM

Part of the Southwest 1/4 of Section 20, And Part of the North 1/2 of the Northwest 1/4 of Section 29, T 20N, R1W, Butman Township, Gladwin County, State of Michigan.



"LAKE LANCASTER" FLOOD PLAIN CONTOUR LINE AS ESTABLISHED BY THE DEPARTMENT OF NATURAL RESOURCES (ELEV. 841.5 U.S.G.S. DATUM).

- LEGEND:
1. ALL DIMENSIONS ARE IN FEET.
  2. CONCRETE MONUMENTS HAVE BEEN PLACED AT ALL POINTS MARKED "O".
  3. ALL LOT CORNERS HAVE BEEN MARKED WITH 1/2" IRON BARS 18" IN LENGTH.
  4. BEARINGS WERE ESTABLISHED FROM SOLAR OBSERVATIONS 5-1-71.
  5. CURVE DIMENSIONS ARE ARC LENGTHS.



LENGTH	RADIUS	CURVE DATA		LONG CHORD	
		DELTA	TANGENT		
1.	118.79'	342.65'	19°51'49"	60.00'	N79°40'11"E, 118.20'
2.	141.68'	408.65'	19°51'49"	71.56'	N79°40'11"E, 140.97'
3.	155.60'	423.34'	21°03'33"	78.69'	N80°16'03"E, 154.73'
4.	131.34'	357.34'	21°03'33"	66.42'	N80°16'03"E, 130.60'
5.	169.46'	866.68'	11°12'09"	85.00'	N06°23'56"E, 169.18'
6.	156.55'	800.68'	11°12'09"	78.52'	N06°23'56"E, 156.30'
7.	345.57'	66.00'	300°00'00"		S78°00'00"W, 66.00'
7-A.	60.88'	66.00'	57°50'48"	32.80'	N79°02'58"W, 58.74'
8.	139.95'	1103.23'	07°16'06"	65.87'	S85°34'07"E, 139.85'
9.	131.57'	1037.23'	07°16'06"	70.07'	S85°34'07"E, 131.49'
10.	456.07'	220.00'	118°46'37"	371.82'	S22°32'45"E, 378.68'
11.	319.25'	154.00'	118°46'37"	260.28'	S22°32'45"E, 265.07'
36.	65.97'	42.00'	90°00'00"	42.00'	S44°36'08"W, 59.39'
37.	117.81'	75.00'	90°00'00"	75.00'	S44°36'08"W, 106.06'
38.	117.81'	75.00'	90°00'00"	75.00'	N45°23'52"W, 106.06'
39.	65.97'	42.00'	90°00'00"	42.00'	N45°23'52"W, 59.39'

RECORDING CERTIFICATE  
STATE OF MICHIGAN )  
GLADWIN COUNTY )  
THIS PLAT WAS RECEIVED FOR RECORD ON THE  
29th DAY OF October, 1979  
AT 3:30 P.M., AND RECORDED  
IN LIBER 15 OF PLATS ON  
PAGES 46-47-48 & 49

Faye Edick  
FAYE EDICK REGISTER OF DEEDS

