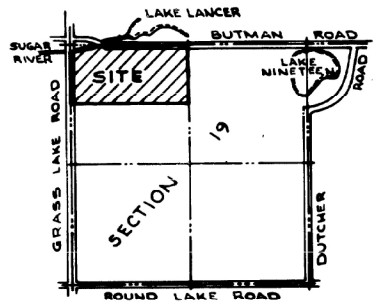
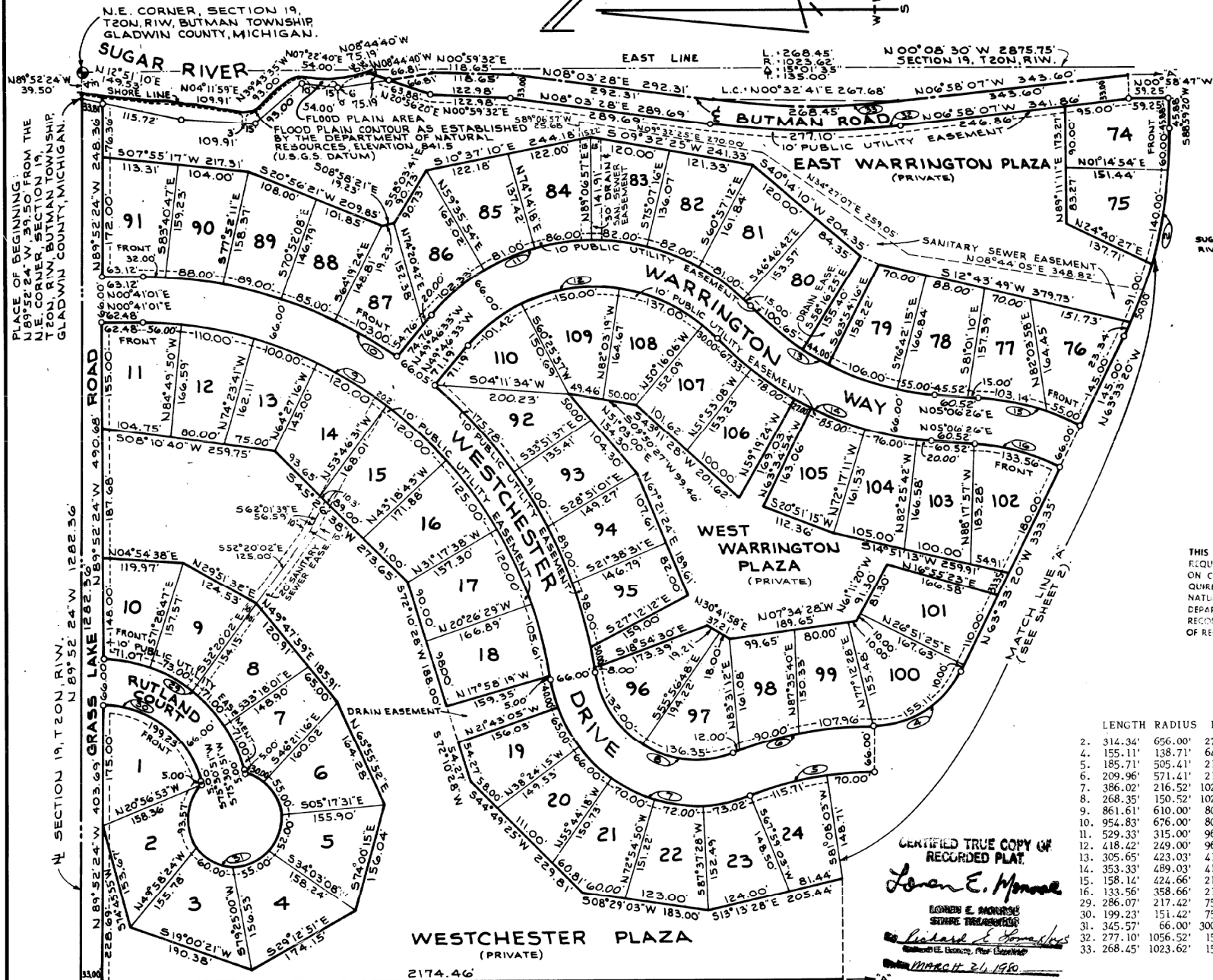
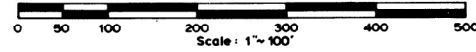


NORTH - WESTCHESTER REALM

Part of the East 1/2 of the Northeast 1/4 of Section 19, T20N, R1W,
Butman Township, Gladwin County, State of Michigan.

- LEGEND:
1. ALL DIMENSIONS ARE IN FEET.
 2. CONCRETE MONUMENTS HAVE BEEN PLACED AT ALL POINTS MARKED "O".
 3. ALL LOT CORNERS HAVE BEEN MARKED WITH 1/2" IRON BARS 18" IN LENGTH.
 4. BEARINGS WERE ESTABLISHED FROM SOLAR OBSERVATION 3-1-71.
 5. CURVE DIMENSIONS ARE ARC LENGTHS.



LOCATION SKETCH
NO SCALE

THIS PLAT IS SUBJECT TO RESTRICTIONS AS REQUIRED BY ACT 288 OF 1967 AS AMENDED ON CERTAIN POINTS WITH RESPECT TO THE REQUIREMENTS OF THE MICHIGAN DEPARTMENT OF NATURAL RESOURCES AND OF THE MICHIGAN DEPARTMENT OF PUBLIC HEALTH WHICH ARE RECORDED IN LIBER 283 PAGE 677-691 OF RECORDS OF THIS COUNTY.

	LENGTH	RADIUS	DELTA	TANGENT	LONG CHORD
2.	314.34'	656.00'	27° 27' 20"	160.25'	N 77° 17' 00" W, 311.34'
4.	155.11'	138.71'	62° 04' 17"	86.79'	N 31° 31' 12" W, 147.15'
5.	185.71'	505.41'	21° 03' 11"	93.92'	N 109° 00' 39" W, 184.66'
6.	209.96'	571.21'	21° 03' 11"	106.17'	N 109° 00' 39" W, 208.78'
7.	386.00'	216.52'	102° 09' 00"	268.09'	N 30° 32' 16" E, 338.89'
8.	268.35'	150.52'	102° 09' 00"	186.37'	N 30° 32' 16" E, 232.19'
9.	861.61'	610.00'	80° 55' 45"	520.34'	N 41° 08' 54" E, 791.75'
10.	954.83'	676.00'	80° 55' 45"	576.64'	N 41° 08' 54" E, 877.41'
11.	529.33'	315.00'	96° 16' 51"	351.57'	N 01° 38' 08" W, 469.21'
12.	418.42'	249.00'	96° 16' 51"	277.90'	N 01° 38' 08" W, 370.90'
13.	305.65'	423.03'	41° 23' 52"	159.84'	N 25° 48' 22" E, 299.04'
14.	353.33'	489.03'	41° 23' 52"	184.77'	N 25° 48' 22" E, 345.23'
15.	158.14'	424.66'	21° 20' 14"	80.00'	N 15° 46' 33" E, 157.23'
16.	133.56'	358.66'	21° 20' 14"	67.56'	N 15° 46' 33" E, 132.79'
29.	286.07'	217.42'	75° 23' 15"	168.00'	S 37° 49' 14" W, 265.87'
30.	199.23'	151.42'	75° 23' 15"	117.00'	S 37° 49' 14" W, 185.16'
31.	345.57'	66.00'	300° 00' 00"	38.10'	N 14° 29' 09" W, 66.00'
32.	277.10'	1056.52'	15° 01' 35"	139.35'	N 00° 32' 41" E, 276.31'
33.	268.45'	1023.62'	15° 01' 35"	135.00'	N 00° 32' 41" E, 267.68'

CERTIFIED TRUE COPY OF RECORDED PLAT.
Loren E. Monroe
LOREN E. MONROE
SURVEYOR
Richard E. Tompkins
REGISTERED ENGINEER, PLAT CORRECTOR
MARCH 24, 1980

WESTCHESTER PLAZA (PRIVATE)
2174.46'

EAST 1/8 LINE, SECTION 19, T20N, R1W. 500° 08' 08" E 2801.36' UNPLATTED

NORTH - WESTCHESTER REALM

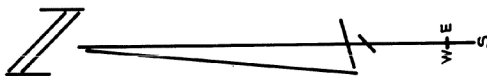
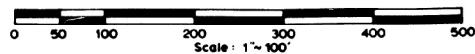
Part of the East 1/2 of the Northeast 1/4 of Section 19, T 20 N, R 1 W,
Butman Township, Gladwin County, State of Michigan.

CURVE DATA

LENGTH	RADIUS	DELTA	TANGENT	LONG CHORD
1. 345.98'	722.00'	27° 27' 20"	176.37'	N 77° 17' 00" W, 342.67'
2. 314.34'	656.00'	27° 27' 20"	160.25'	N 77° 17' 00" W, 311.34'
3. 228.91'	204.71'	64° 04' 17"	128.09'	N 31° 31' 12" W, 217.17'
4. 155.11'	138.71'	64° 04' 17"	86.79'	N 31° 31' 12" W, 147.15'
5. 185.71'	505.41'	21° 03' 11"	93.92'	N 10° 00' 39" W, 184.66'
17. 270.57'	540.00'	28° 42' 31"	138.19'	S 01° 19' 17" W, 267.75'
18. 303.64'	606.00'	28° 42' 31"	155.08'	S 01° 19' 17" W, 300.47'
19. 292.14'	228.00'	73° 24' 51"	169.99'	S 23° 40' 27" W, 272.56'
20. 207.57'	162.00'	73° 24' 51"	120.78'	S 23° 40' 27" W, 193.66'
21. 101.14'	440.00'	13° 10' 13"	50.79'	S 66° 57' 59" W, 100.91'
22. 85.96'	374.00'	13° 10' 13"	43.17'	S 66° 57' 59" W, 85.77'
23. 318.79'	175.00'	104° 22' 25"	225.50'	N 54° 15' 43" W, 276.50'
24. 198.56'	109.00'	104° 22' 25"	140.45'	N 54° 15' 43" W, 172.22'
25. 345.57'	66.00'	300° 00' 00"	38.10'	N 87° 55' 30" E, 66.00'
26. 196.57'	163.12'	69° 02' 49"	112.21'	S 11° 30' 17" W, 184.89'
27. 64.38'	97.12'	37° 59' 00"	33.42'	S 70° 13' 13" W, 63.21'
28. 288.10'	66.00'	250° 06' 21"	94.07'	S 66° 26' 28" W, 108.05'



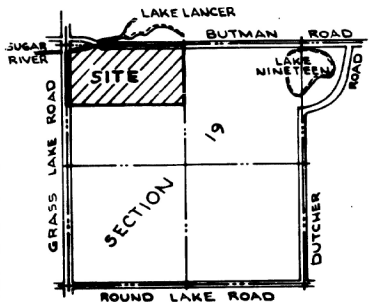
JOHN MEYERS R.L.S. 10099



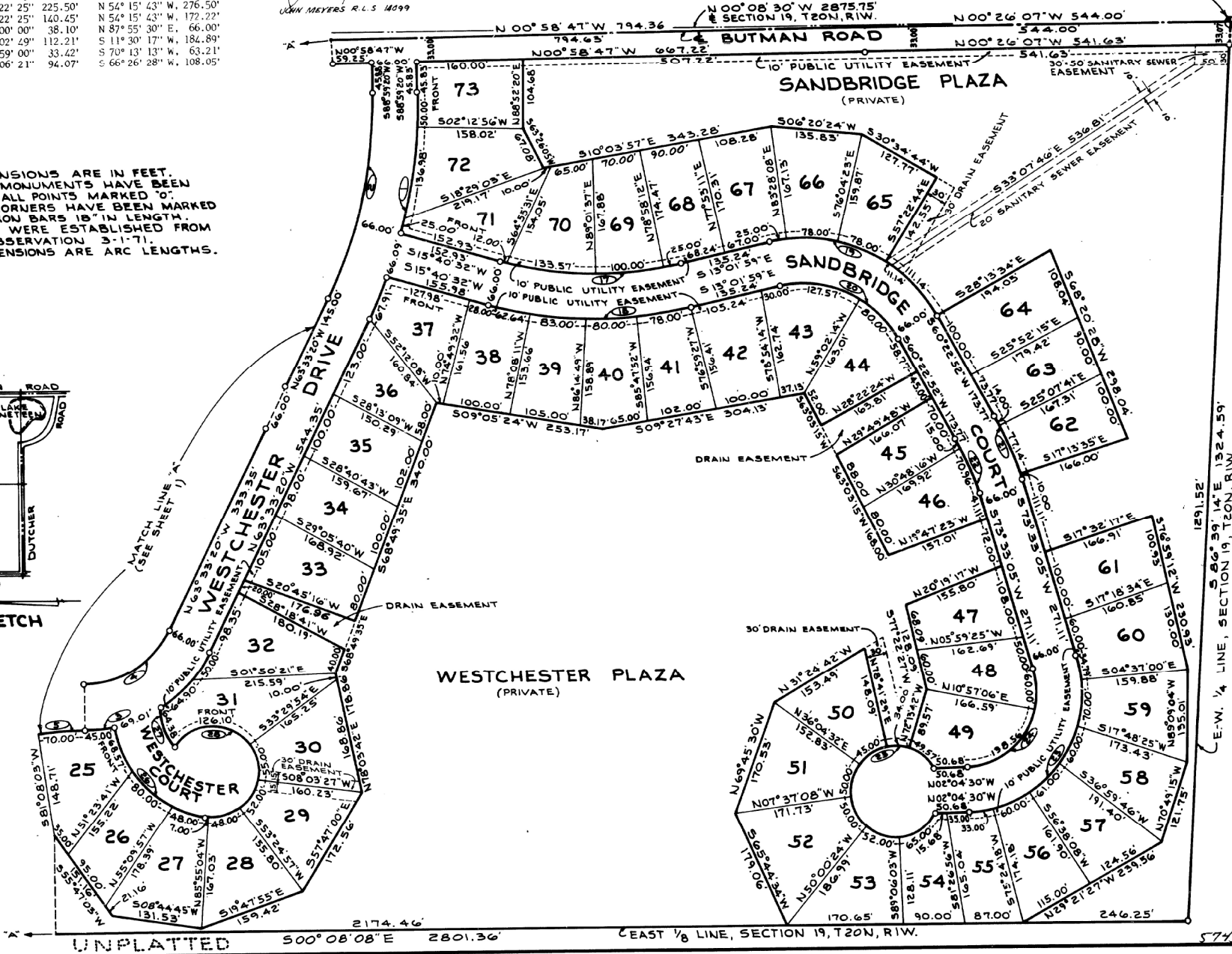
EAST 1/4 CORNER, SECTION 19,
T20N, R1W, BUTMAN TOWNSHIP,
GLADWIN COUNTY, MICHIGAN.

LEGEND:

1. ALL DIMENSIONS ARE IN FEET.
2. CONCRETE MONUMENTS HAVE BEEN PLACED AT ALL POINTS MARKED "O".
3. ALL LOT CORNERS HAVE BEEN MARKED WITH 1/2" IRON BARS 18" IN LENGTH.
4. BEARINGS WERE ESTABLISHED FROM SOLAR OBSERVATION 3-1-71.
5. CURVE DIMENSIONS ARE ARC LENGTHS.



LOCATION SKETCH
NO SCALE



UNPLATTED

UNPLATTED

500° 08' 08" E 2801.36'

EAST 1/8 LINE, SECTION 19, T20N, R1W.

57434