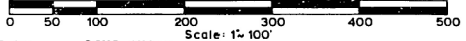


- LEGEND:
1. ALL DIMENSIONS ARE IN FEET.
 2. CURVE DIMENSIONS ARE ARC LENGTHS.
 3. CONCRETE MONUMENTS HAVE BEEN PLACED AT ALL POINTS MARKED "O".
 4. ALL LOT CORNERS HAVE BEEN MARKED WITH 1/2" IRON BARS 18" IN LENGTH.
 5. BEARINGS WERE ESTABLISHED FROM SOLAR OBSERVATION, 3-1-71.

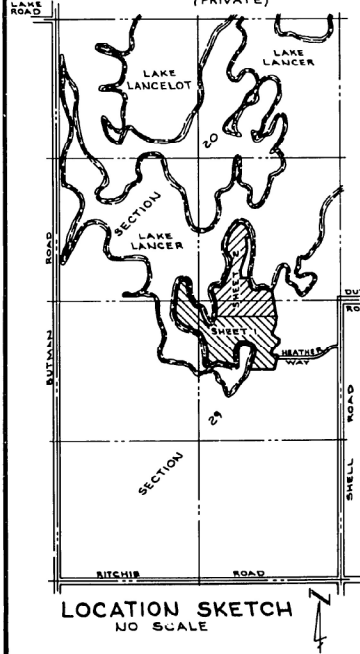
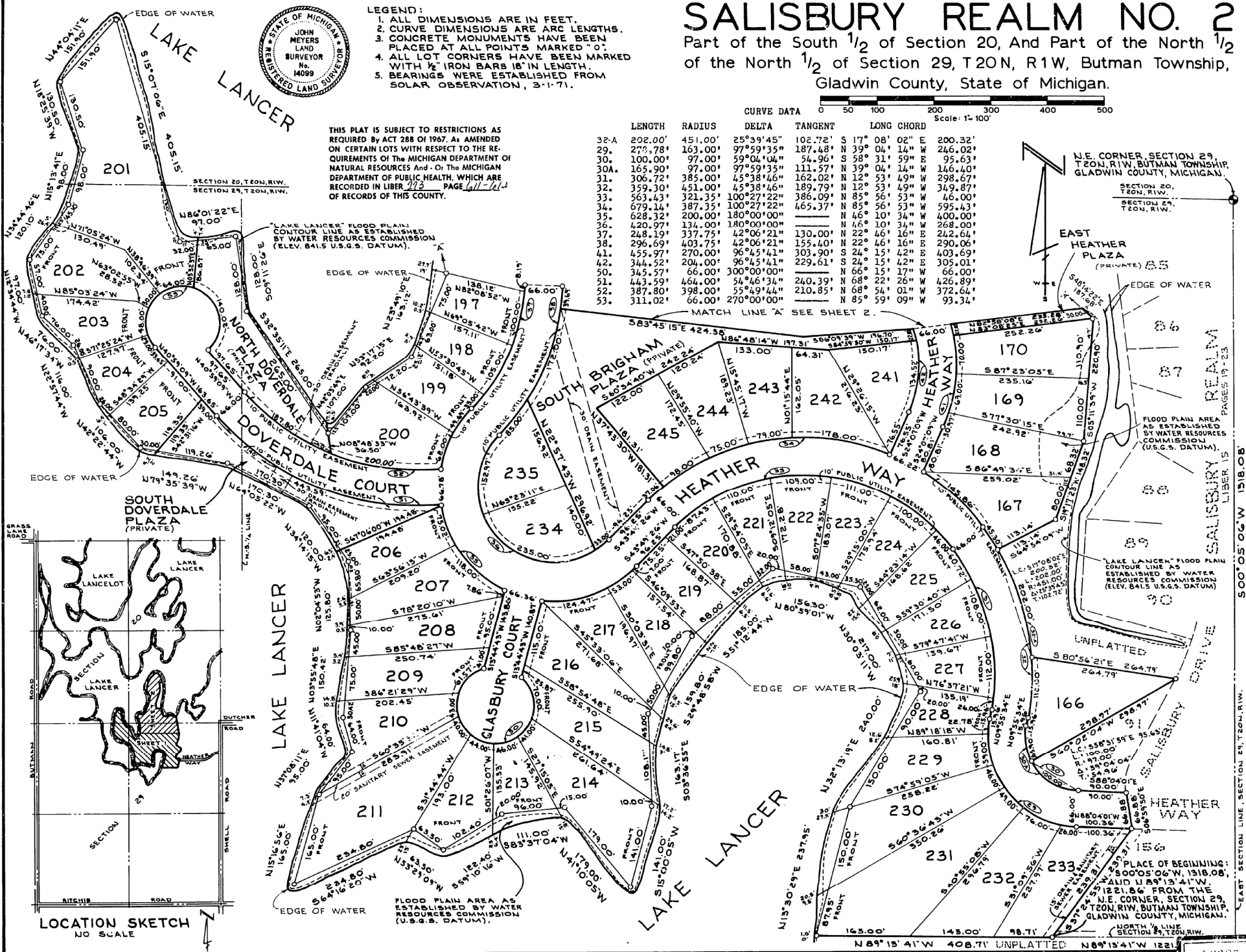
SALISBURY REALM NO. 2

Part of the South 1/2 of Section 20, And Part of the North 1/2 of the North 1/2 of Section 29, T20N, R1W, Butman Township, Gladwin County, State of Michigan.



THIS PLAT IS SUBJECT TO RESTRICTIONS AS REQUIRED BY ACT 288 OF 1967, AS AMENDED ON CERTAIN LOTS WITH RESPECT TO THE REQUIREMENTS OF THE MICHIGAN DEPARTMENT OF NATURAL RESOURCES AND - OR - THE MICHIGAN DEPARTMENT OF PUBLIC HEALTH, WHICH ARE RECORDED IN LIBER 773 PAGE 141-142 OF RECORDS OF THIS COUNTY.

	LENGTH	RADIUS	DELTA	TANGENT	LONG CHORD	
32-A	202.00'	451.00'	25°39'45"	102.72'	S 17° 08' 02" E	200.32'
29	279.78'	163.00'	97°59'35"	187.48'	N 39° 04' 14" W	246.02'
30	100.00'	97.00'	59°04'04"	54.96'	S 58° 31' 59" E	95.63'
30A	165.90'	97.00'	97°59'35"	111.57'	N 39° 04' 14" W	146.40'
31	306.72'	385.00'	45°38'46"	162.02'	N 12° 53' 49" W	298.67'
32	359.30'	451.00'	45°38'46"	189.79'	N 12° 53' 49" W	349.87'
33	563.43'	321.35'	100°27'22"	386.09'	N 85° 56' 53" W	46.00'
34	679.14'	387.35'	100°27'22"	465.37'	N 85° 56' 53" W	595.43'
35	628.32'	200.00'	180°00'00"		N 46° 10' 34" W	400.00'
36	420.97'	134.00'	180°00'00"		N 46° 10' 34" W	268.00'
37	248.19'	337.75'	42°06'21"	130.00'	N 22° 46' 16" E	242.64'
38	296.69'	403.75'	42°06'21"	155.40'	N 22° 46' 16" E	290.06'
41	435.97'	270.00'	96°45'41"	303.90'	S 24° 15' 42" E	403.69'
42	344.52'	204.00'	96°45'41"	229.61'	S 24° 15' 42" E	305.01'
50	345.57'	66.00'	300°00'00"		N 66° 15' 17" W	66.00'
51	443.59'	464.00'	54°46'34"	240.39'	N 68° 22' 26" W	426.89'
52	387.80'	398.00'	55°49'44"	210.85'	N 68° 54' 01" W	372.64'
53	311.02'	66.00'	270°00'00"		N 85° 59' 09" W	93.34'



N.E. CORNER SECTION 29, T20N, R1W, BUTMAN TOWNSHIP, GLADWIN COUNTY, MICHIGAN.

SECTION 20, T20N, R1W, SECTION 29, T20N, R1W.

EAST HEATHER PLAZA (PRIVATE)

170, 169, 168, 167, 166, 165, 164, 163, 162, 161, 160, 159, 158, 157, 156, 155, 154, 153, 152, 151, 150, 149, 148, 147, 146, 145, 144, 143, 142, 141, 140, 139, 138, 137, 136, 135, 134, 133, 132, 131, 130, 129, 128, 127, 126, 125, 124, 123, 122, 121, 120, 119, 118, 117, 116, 115, 114, 113, 112, 111, 110, 109, 108, 107, 106, 105, 104, 103, 102, 101, 100, 99, 98, 97, 96, 95, 94, 93, 92, 91, 90, 89, 88, 87, 86, 85, 84, 83, 82, 81, 80, 79, 78, 77, 76, 75, 74, 73, 72, 71, 70, 69, 68, 67, 66, 65, 64, 63, 62, 61, 60, 59, 58, 57, 56, 55, 54, 53, 52, 51, 50, 49, 48, 47, 46, 45, 44, 43, 42, 41, 40, 39, 38, 37, 36, 35, 34, 33, 32, 31, 30, 29, 28, 27, 26, 25, 24, 23, 22, 21, 20, 19, 18, 17, 16, 15, 14, 13, 12, 11, 10, 9, 8, 7, 6, 5, 4, 3, 2, 1.

FLOOD PLAIN AREA AS ESTABLISHED BY WATER RESOURCES COMMISSION (U.S.G.S. DATUM).

LAKE LANCER FLOOD PLAIN CONTOUR LINE AS ESTABLISHED BY WATER RESOURCES COMMISSION (U.S.G.S. DATUM).

UNPLATTED

HEATHER WAY

HEATHER WAY

HEATHER WAY

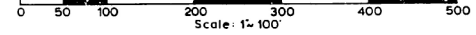
PLACE OF BEGINNING: 500°05'06" W, 1318.08' AND U89°13'41" W, 1221.86' FROM THE N.E. CORNER, SECTION 29, T20N, R1W, BUTMAN TOWNSHIP, GLADWIN COUNTY, MICHIGAN.

NORTH 1/2 LINE SECTION 29, T20N, R1W.

N89°13'41" W 408.71' UNPLATTED N89°13'41" W 1221

SALISBURY REALM NO. 2

Part of the South 1/2 of Section 20, And Part of the North 1/2 of the North 1/2 of Section 29, T20N, R1W, Butman Township, Gladwin County, State of Michigan.

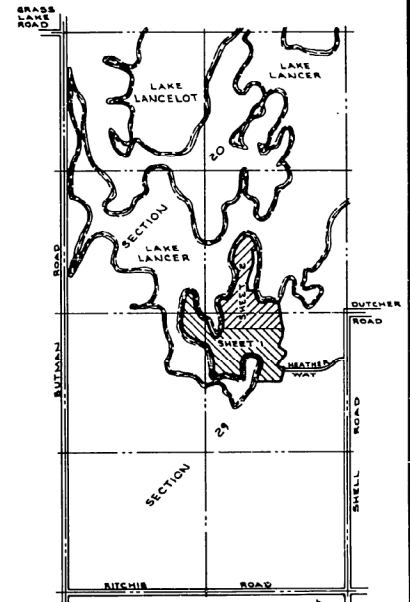


Continued from plat of
Richard L. Green
 ALLISON GREEN
 STATE TREASURER
 By *Richard L. Green*
 Richard L. Green, Notary Public
 Date July 17, 1978

LENGTH	RADIUS	CURVE DATA		LONG CHORD
		DELTA	TANGENT	
37.	248.19'	337.75'	42°06'21"	130.00'
38.	296.69'	403.75'	42°06'21"	155.40'
39.	404.73'	219.52'	105°38'23"	289.41'
40.	283.03'	153.51'	105°38'23"	202.39'
41.	455.97'	270.00'	96°45'41"	303.90'
42.	344.52'	204.00'	96°45'41"	229.61'
54.	152.71'	746.37'	11°43'21"	76.62'
55.	143.85'	630.37'	12°06'53"	72.19'
56.	268.83'	390.15'	39°28'45"	140.00'
57.	223.35'	324.15'	39°28'45"	116.31'
58.	110.64'	174.65'	36°17'49"	57.25'
59.	152.45'	240.65'	36°17'49"	78.88'
60.	311.02'	66.00'	270°00'00"	N 46° 54' 33" E 93.34'

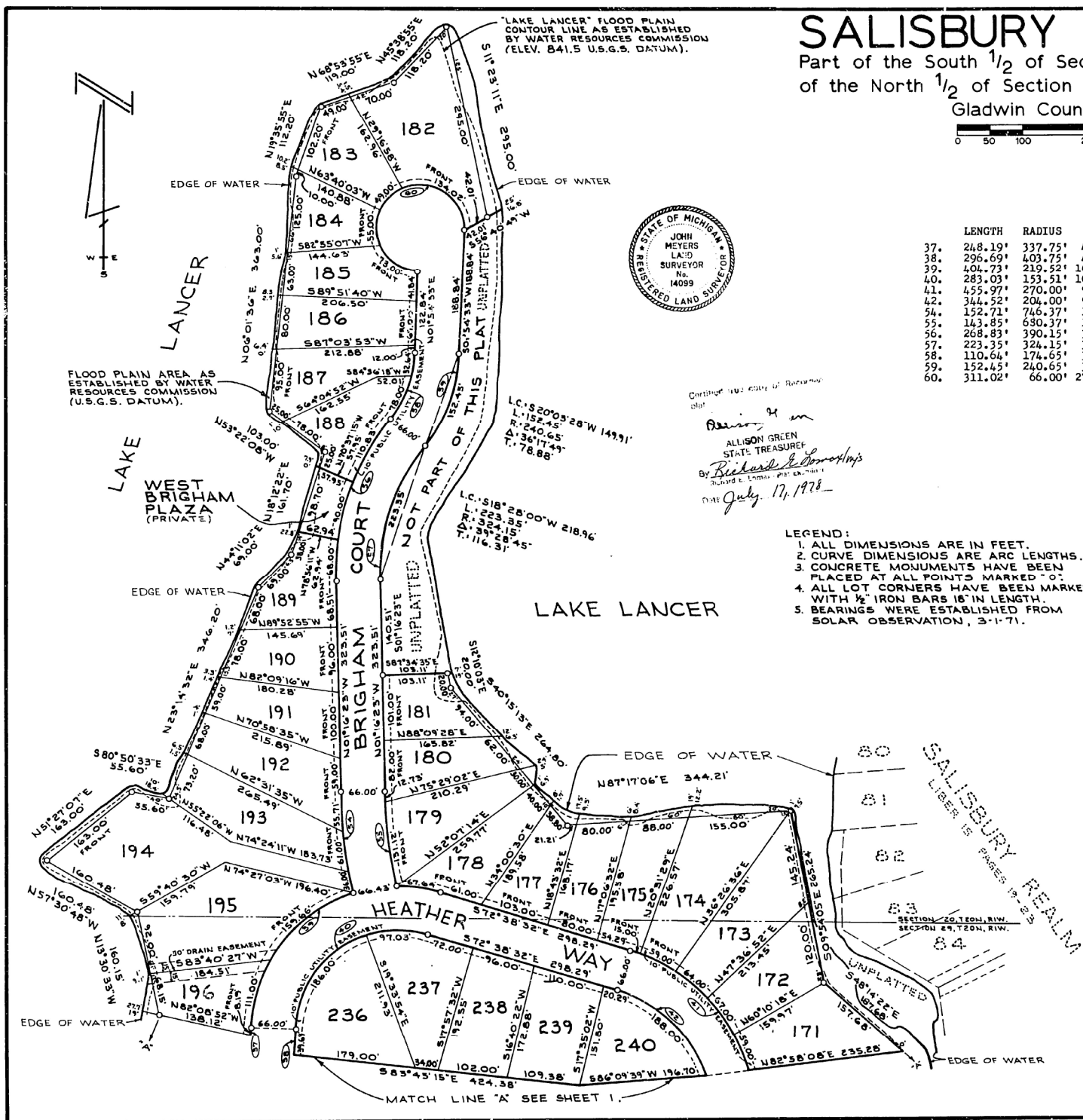
LEGEND:

1. ALL DIMENSIONS ARE IN FEET.
2. CURVE DIMENSIONS ARE ARC LENGTHS.
3. CONCRETE MONUMENTS HAVE BEEN PLACED AT ALL POINTS MARKED "C".
4. ALL LOT CORNERS HAVE BEEN MARKED WITH 1/2" IRON BARS 16" IN LENGTH.
5. BEARINGS WERE ESTABLISHED FROM SOLAR OBSERVATION, 3-1-71.



LOCATION SKETCH
NO SCALE

56285



FLOOD PLAIN AREA AS ESTABLISHED BY WATER RESOURCES COMMISSION (U.S.G.S. DATUM).

MATCH LINE "A" SEE SHEET 1.