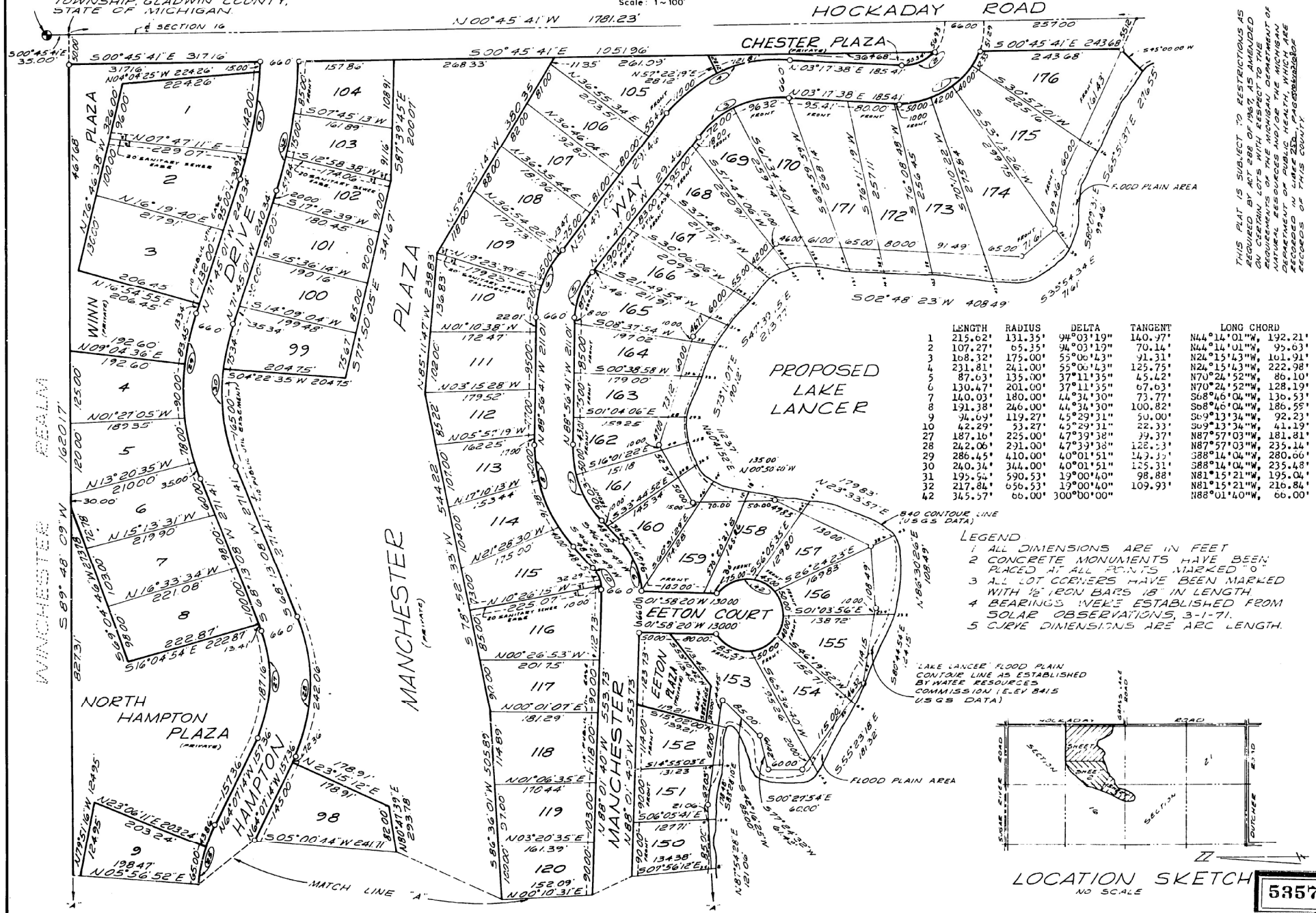
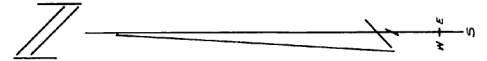
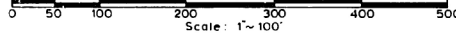


EAST 1/4 CORNER, SECTION 16, T20N, R1W, BUTMAN TOWNSHIP, GLADWIN COUNTY, STATE OF MICHIGAN.

MANCHESTER REALM

Part of the S. 1/2 of Section 16, & Part of the N. 1/2 of Section 21, T20N, R1W, Butman Township, Gladwin County, State of Michigan.

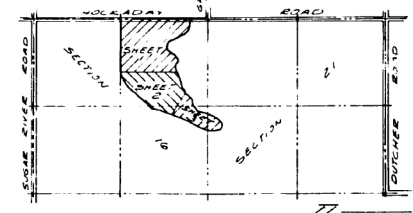
PLACE OF BEGINNING:
500°45'41"E, ALONG THE EAST SECTION LINE, 3500' FROM THE EAST 1/4 CORNER, SECTION 16, T20N, R1W, BUTMAN TOWNSHIP, GLADWIN COUNTY, STATE OF MICHIGAN.



	LENGTH	RADIUS	DELTA	TANGENT	LONG CHORD
1	215.62'	131.35'	94°03'19"	140.97'	N44°14'01"W, 192.21'
2	107.27'	65.35'	94°03'19"	70.14'	N44°14'01"W, 95.63'
3	168.32'	175.00'	55°06'43"	91.31'	N24°15'43"W, 101.91'
4	231.81'	241.00'	55°06'43"	125.75'	N24°15'43"W, 222.98'
5	87.63'	135.00'	37°11'35"	45.42'	N70°21'52"W, 86.10'
6	130.47'	201.00'	37°11'35"	67.63'	N70°21'52"W, 128.19'
7	140.03'	180.00'	44°34'30"	73.77'	S68°46'04"W, 130.53'
8	191.38'	246.00'	44°34'30"	100.82'	S68°46'04"W, 186.55'
9	34.69'	119.27'	45°29'31"	50.00'	S69°13'34"W, 92.23'
10	42.29'	53.27'	45°29'31"	22.33'	S69°13'34"W, 41.19'
27	187.16'	225.00'	47°39'38"	39.37'	N87°57'03"W, 181.81'
28	242.06'	291.00'	47°39'38"	122.33'	N87°57'03"W, 235.14'
29	286.45'	410.00'	40°01'51"	147.33'	S88°14'04"W, 280.66'
30	240.34'	344.00'	40°01'51"	125.31'	S88°14'04"W, 235.48'
31	195.54'	590.53'	19°00'40"	98.88'	N81°15'21"W, 195.04'
32	217.84'	656.53'	19°00'40"	109.93'	N81°15'21"W, 216.84'
42	345.57'	66.00'	100°00'00"		N88°01'04"W, 66.00'

- LEGEND**
- 1 ALL DIMENSIONS ARE IN FEET
 - 2 CONCRETE MONUMENTS HAVE BEEN PLACED AT ALL CORNERS, MARKED "O"
 - 3 ALL LOT CORNERS HAVE BEEN MARKED WITH 1/2" IRON BARS 18" IN LENGTH
 - 4 BEARINGS WERE ESTABLISHED FROM SOLAR OBSERVATIONS, 3-1-71.
 - 5 CURVE DIMENSIONS ARE ARC LENGTH.

LAKE LANCER FLOOD PLAN CONTOUR LINE AS ESTABLISHED BY WATER RESOURCES COMMISSION (ELEV 8415 USGS DATA)



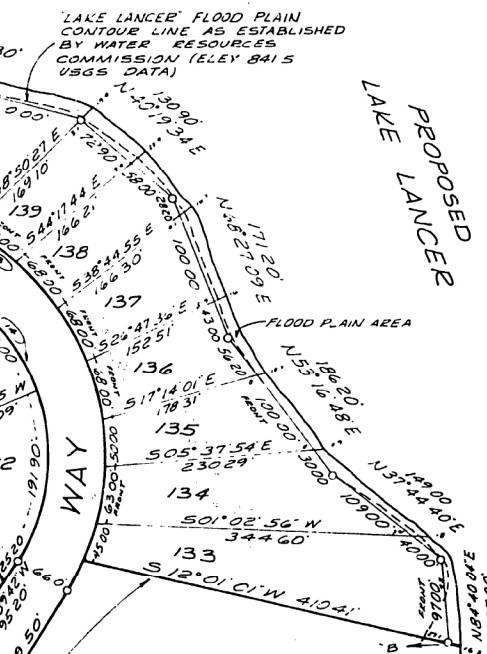
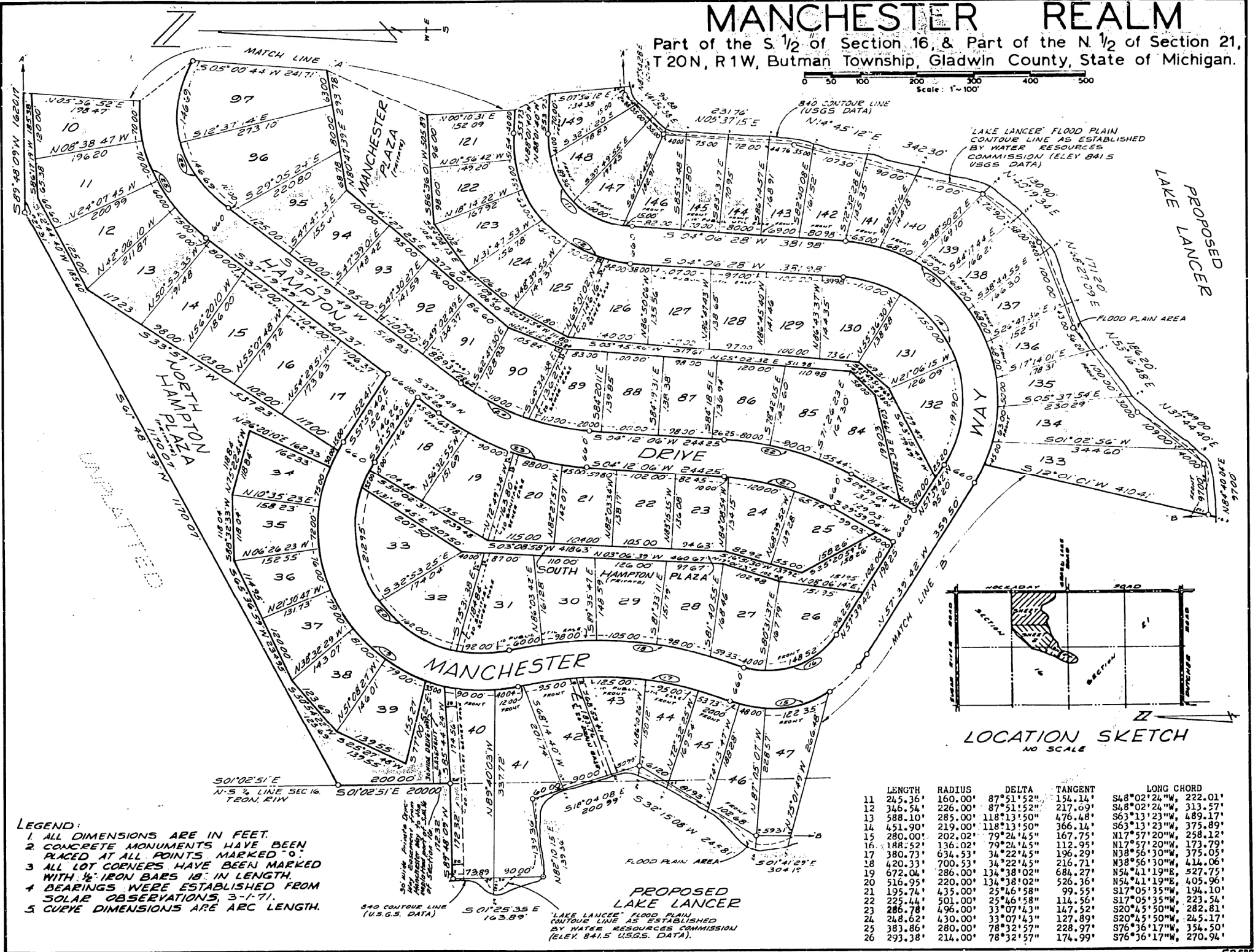
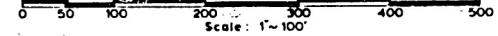
LOCATION SKETCH NO SCALE

53577

THIS PLAT IS SUBJECT TO RESTRICTIONS AS REQUIRED BY ACT 268 OF 1967 AS AMENDED ON CERTAIN LOTS WITH RESPECT TO THE REQUIREMENTS OF THE MICHIGAN DEPARTMENT OF NATURE RESOURCES WITHIN THE MICHIGAN DEPARTMENT OF NATURE RESOURCES RECORDS IN LANSING, MICHIGAN.

MANCHESTER REALM

Part of the S 1/2 of Section 16, & Part of the N 1/2 of Section 21,
T20N, R1W, Butman Township, Gladwin County, State of Michigan.



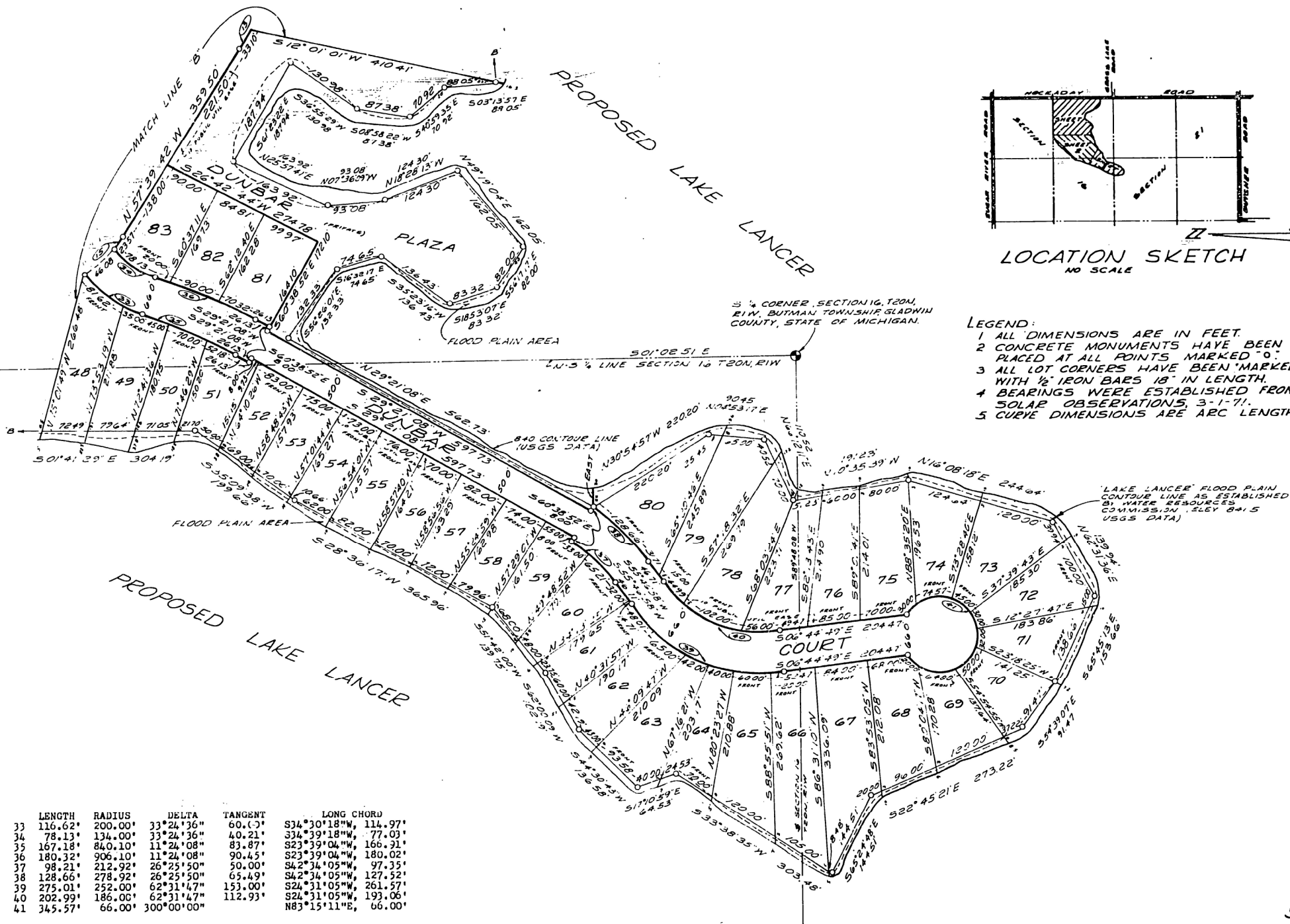
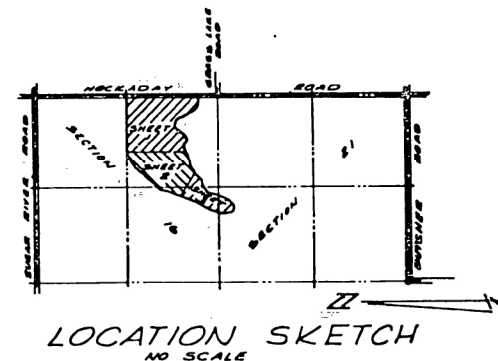
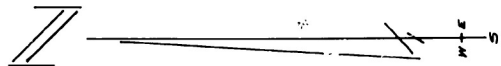
- LEGEND:**
1. ALL DIMENSIONS ARE IN FEET.
 2. CONCRETE MONUMENTS HAVE BEEN PLACED AT ALL POINTS MARKED "O".
 3. ALL LOT CORNERS HAVE BEEN MARKED WITH 1/2" IRON BARS 18" IN LENGTH.
 4. BEARINGS WERE ESTABLISHED FROM SOLAR OBSERVATIONS, 3-1-71.
 5. CURVE DIMENSIONS ARE ARC LENGTH.

	LENGTH	RADIUS	DELTA	TANGENT	LONG CHORD
11	215.36'	160.00'	87°51'52"	154.14'	S48°02'24"W, 222.01'
12	346.54'	226.00'	87°51'52"	217.69'	S48°02'24"W, 313.57'
13	588.10'	285.00'	118°13'50"	476.48'	S63°13'23"W, 489.17'
14	451.90'	219.00'	118°13'50"	366.14'	S63°13'23"W, 375.89'
15	280.00'	202.02'	79°24'45"	167.75'	N17°57'20"W, 258.12'
16	188.52'	136.02'	79°24'45"	112.95'	N17°57'20"W, 173.79'
17	380.73'	634.53'	34°22'45"	196.29'	N38°56'30"W, 375.05'
18	420.33'	700.53'	34°22'45"	216.71'	N38°56'30"W, 414.06'
19	672.04'	286.00'	134°38'02"	684.27'	N54°41'19"E, 527.75'
20	516.95'	220.00'	134°38'02"	526.36'	N54°41'19"E, 490.96'
21	195.74'	435.00'	25°46'58"	99.55'	S17°05'35"W, 194.10'
22	225.44'	501.00'	25°46'58"	114.56'	S17°05'35"W, 223.54'
23	286.78'	496.00'	33°07'43"	147.52'	S20°45'50"W, 282.81'
24	248.62'	430.00'	33°07'43"	127.89'	S20°45'50"W, 245.17'
25	383.86'	280.00'	78°32'57"	228.97'	S76°36'17"W, 358.50'
26	293.38'	214.00'	78°32'57"	174.99'	S76°36'17"W, 270.94'

MANCHESTER REALM

Part of the S 1/2 of Section 16, & Part of the N 1/2 of Section 21,
T20N, R1W, Butman Township, Gladwin County, State of Michigan.

Scale: 1"=100'



- LEGEND:
- 1 ALL DIMENSIONS ARE IN FEET.
 - 2 CONCRETE MONUMENTS HAVE BEEN PLACED AT ALL POINTS MARKED 'O'.
 - 3 ALL LOT CORNERS HAVE BEEN MARKED WITH 1/2" IRON BARS 18" IN LENGTH.
 - 4 BEARINGS WERE ESTABLISHED FROM SOLAR OBSERVATIONS, 3-1-71.
 - 5 CURVE DIMENSIONS ARE ARC LENGTH.

LENGTH	RADIUS	DELTA	TANGENT	LONG CHORD
33 116.62'	200.00'	33°24'36"	60.43'	S34°30'18"W, 114.97'
34 78.13'	134.00'	33°24'36"	40.21'	S34°39'18"W, 77.03'
35 167.18'	840.10'	11°24'08"	83.87'	S23°39'04"W, 166.31'
36 180.32'	906.10'	11°24'08"	90.45'	S23°39'04"W, 180.02'
37 98.21'	212.92'	26°25'50"	50.00'	S42°34'05"W, 97.35'
38 128.66'	278.92'	26°25'50"	65.49'	S42°34'05"W, 127.52'
39 275.01'	252.00'	62°31'47"	153.00'	S24°31'05"W, 261.57'
40 202.99'	186.00'	62°31'47"	112.93'	S24°31'05"W, 193.06'
41 345.57'	66.00'	300°00'00"		N83°15'11"E, 66.00'